

Technical Specification

AKW Safety Flooring meets the requirements of EN - ISO 10582 & EN 13845

Feature	ISO Standard	Detail
Total thickness	EN - ISO 24346	2.0 mm
Thickness wear layer	EN - ISO 24340	0.7 mm
Commercial very heavy	EN - ISO 10874	Class 34
Light industrial	EN - ISO 10874	Class 43
Roll width	EN - ISO 24341	2.00 m
Roll length	EN - ISO 24341	20 - 27 m
Total weight	EN - ISO 23997	2.75 kg/m ²
Dimension stability	EN - ISO 23999	< 0.1%
Residual indentation	EN - ISO 24343-1	≤ 0.05 mm
Castor chair continuous use	EN 425	No effect
Use in wet areas	EN 13553	Yes
Light fastness	EN ISO 105 B-02	≥ 6
Flexibility	EN-ISO 24344	∅ 10 mm
Slip resistance	EN 13845 Annex C	ESb/ESf
	EN 13845 Annex D 50.000 revolutions	Pass
	<10% loss	
	DIN 51130	R10
	DIN 51097	Class B
	TRRL Pendulum – Wet test – slider 96 (with shod)	57
	TRRL Pendulum – Wet test – slider 55 (barefoot)	46
	Surface roughness Rz	≥ 20
Resistance to chemicals	EN-ISO 26987	Very good
Electrical resistance	EN 1081 (R1)	> 1.10 ⁹ Ω

AKW
Life Made Better

AKW
Life Made Better

Orders & Quotes

01905 823 299
01905 823 297 (Fax)
orders@akw-ltd.co.uk

General Enquiries

01905 823 298
sales@akw-ltd.co.uk

Technical Enquiries

01905 560 219
technicalenquiries@akw-ltd.co.uk

AKW

Pointon Way, Hampton Lovett
Droitwich Spa, WR9 0LR

www.akw-ltd.co.uk



AKW
Life Made Better

SAFETY FLOORING

Stylish, comfortable and safe underfoot

AKW Safety Flooring comes in a wide range of stylish colours and provides a high level of slip resistance in a bathroom adaptation.

100% watertight, durable and comfortable underfoot, it's ideal for all bathrooms.

- + Slip resistant even when barefoot
- + Light reflective value – Range includes plain and tonal chip options to help you achieve high contrast in care environment
- + Suitable for dementia users as there are no large speckles in the flooring which can cause confusion
- + Watertight, impervious surface – Fully bonded system that liquids cannot penetrate and has nowhere for bacteria to go
- + Easy to clean, the smooth surface of the flooring limits the build up of limescale
- + Long lasting, provides you with 10 years of guaranteed slip resistant flooring
- + PVC floor covering with glass fire reinforced polyester cellulose backing which allows it to be used with underfloor heating
- + Phthalate free – plasticisers are based on natural resources
- + Cut to order, minimum order size is 2m x 0.5m



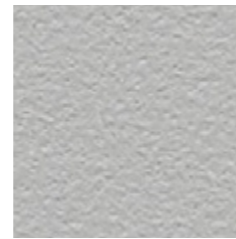
Anthracite
LRV 10
0.5 x 2m

Code: **21891-ANT**



Slate
LRV 18
0.5 x 2m

Code: **21891-SLT**



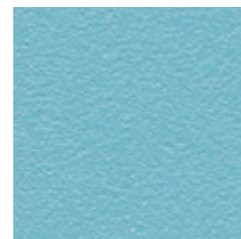
Dove
LRV 38
0.5 x 2m

Code: **21891-DVE**



Rouge
LRV 12
0.5 x 2m

Code: **21891-RGE**



Topaz
LRV 33
0.5 x 2m

Code: **21891-TPZ**



Cerulean
LRV 16
0.5 x 2m

Code: **21891-CRL**



Accessories

Our range of high quality accessories enhance the durability and finish quality of all floor installations.



Bond-it Levelling Floor Compound

- + Self smoothing – mix with water or latex liquid
- + Accepts floor traffic after 3-4 hours
- + An easy-to-use pre-blended single pack ready to mix
- + Coverage – 20Kg bag will cover approximately 3.6m² at a depth of 3mm

20Kg – Code: **21896**



Bond-it Latex Liquid

- + 1:1 Mix ratio - saving you time. For every 20kg pack of Levelmaster use 1 container of Latex Liquid.
- + 24 Month shelf life
- + Levelling compound/ latex mixsets in 24 hours

4.5L – Code: **21895**



Bond-it Contact Adhesive

- + Single use component, no need to mix the adhesive, it is ready to use
- + High initial adhesion strength and final bond strength
- + Long open time – advisable to make bonds within 30 min.
- + Coverage: 2-3m² with spreader – 5-8m² when applied with a brush

5L – Code: **21894**



3m Vinyl Flooring Coving

- + Provides a preformed radius for flooring installation
- + Installing the coving and dressing the flooring up the wall provides an end solution that is easy to clean
- + Colour: Black

Pack of Five – 3m length
Code: **30085**



Flooring Weld Rod

- + Watertight and hygienic seam
- + Range of colours available either matching to floor colour or contrasting for an artistic touch
- + Solidified adhesive in rod application to easily melt into grooves and cuts to seal safety flooring

1m reel – Code: **21893** + Colour code (**ANT, SLT, DVE, RGE, TPZ, CRL**)



CLS Timber 3"x2"

- + Easy to cut and fit
- + Softwood planed with rounded edges
- + Ideal for interior framing, support and carcassing
- + Robust – provides stability and reliability
- + Strength graded to C16 specification
- + Treated with Tanalith

76mm (3") x 50mm (2") x 2400mm (96") – Code: **21887**

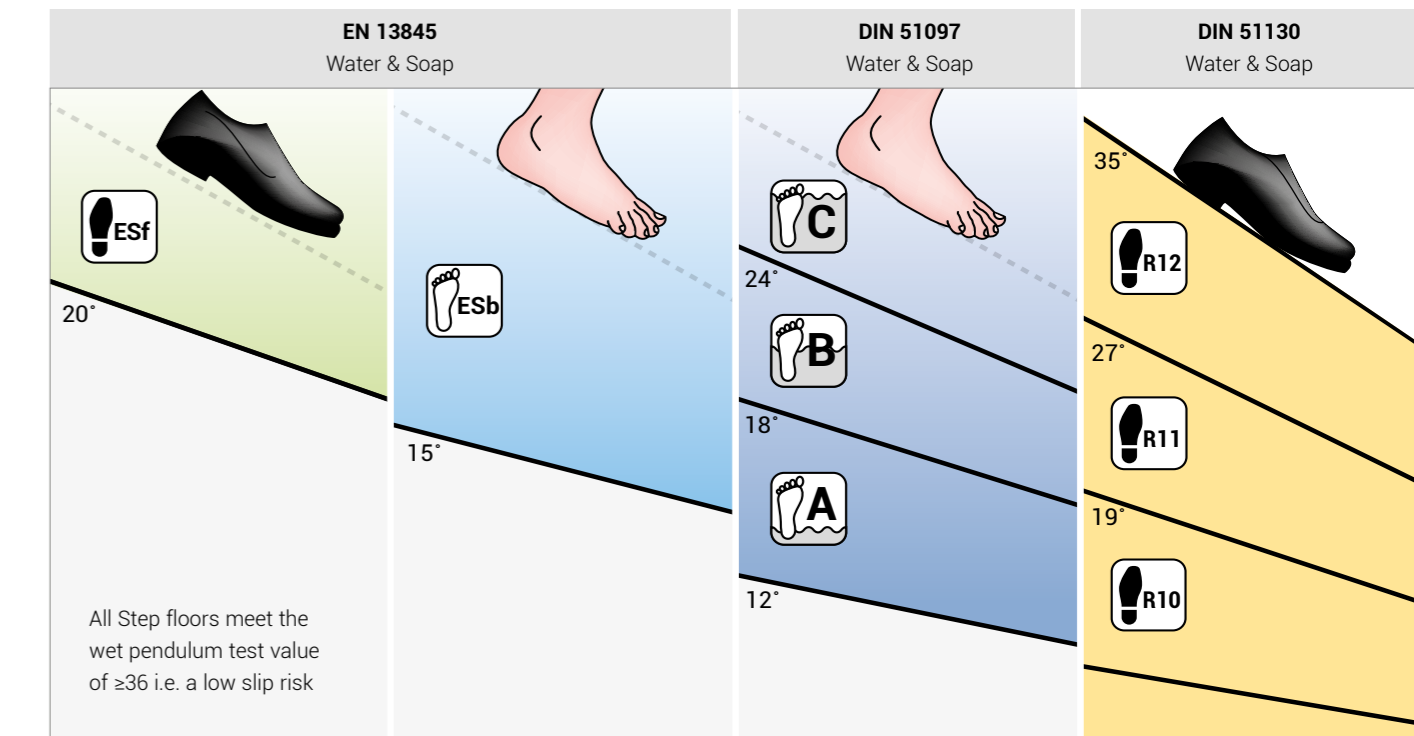


Plywood FSC Certified BB/BB Grade

- + BB/BB graded plywood - good strength to weight ratio and suitable for structural work where face grade is not needed.
- + 100% FSC certified - wood is responsibly sourced, with a full chain of custody
- + Meets EN636 Specification Class 2 - suitable for humid conditions, primarily used for overboarding timber floors.
- + Structural strength and stability
- + WBP glue used - provides added safety of being water and boil proof
- + Available in a thickness of 4mm or 12mm

Plywood 1220mm x 2440mm x 4mm – Code: **21884**
Plywood 1220mm x 2440mm x 12mm – Code: **21885**

Slip resistance



All Step floors meet the wet pendulum test value of ≥ 36 i.e. a low slip risk

EN13845 Longevity of Performance

AKW Safety Flooring exceeds the minimum PTV (Pendulum Test Value) reading requirement of ≥ 36 in both barefoot and footwear. This standard specifies the requirements that must be met to ensure durable slip resistance in varying degrees of usage intensity.

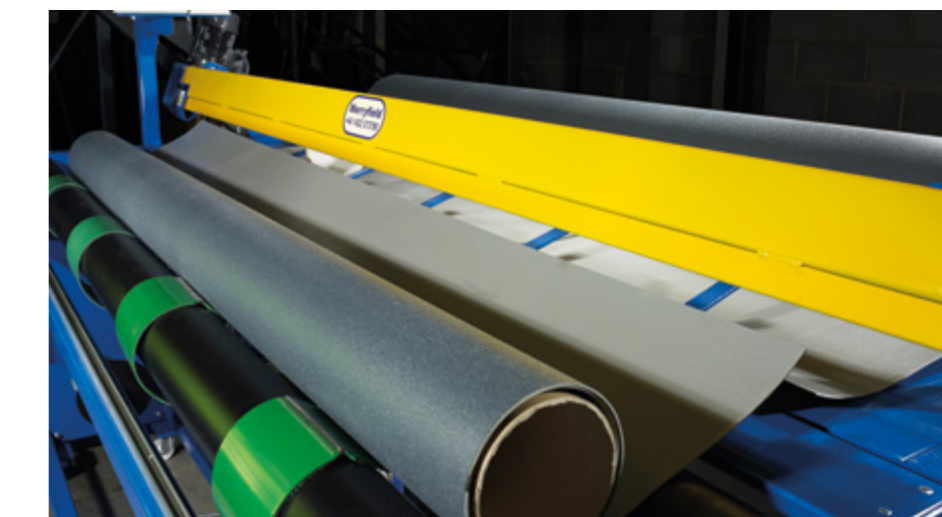
DIN 51097 Water & Soap Environments

For flooring for barefoot use in a wet and soapy environment DIN 51097 applies. AKW safety flooring meets Class B.

DIN 51130 Footwear with Oil Contaminants

Floors are often evaluated on slip resistance performance by using the R-scale, which is linked to the DIN 51130 standard. This test is conducted by covering the surface in oil and wearing cleated safety boots. AKW Flooring meets the R10 Standard. The R11/R12 standards apply to heavy industrial anti-slip floor coverings intended for use with shoes.

Flooring cut to size



The versatile and cost effective flooring solution

Whatever size bathroom you are flooring, our state of the art machine can cut to order. This can save money, help to minimise wastage and assist in delivering the required amount for the install.