

Product Overview

Metal-topped 90mm diameter waste provides a high flow rate (27lpm) when installed with a 15mm head and 1m pipe installation. Compatible with Tuff Form and Tuff Form8® when using adaptor (25409).

Features

- + Shallow 53mm depth
- + Good seals and location
- + High flow rate (27 litres per minute)
- + Suitable for push fit pipe (with included adaptor)
- + Suitable for solvent weld pipe (with included adaptor)
- + Stable, durable metal top
- + Easily accessible with pull off top
- + Roddable for clearing blockages
- + Compatible with Tuff Form® and Tuff Form8® when using Tuff Form® Adaptor (25409)
- + Tuff Form® Adaptor is for use with vinyl only

Benefits

- + Very compact design, ideal for solid floor or shallow joists installations
- + Easy installation and watertight fitting
- + Providing a choice of various installation requirements
- + Easy to open for cleaning purposes
- + Wet room installation can be achieved using GW90 Waste (25434) and Tuff Form® Adaptor (25409)
- + Tuff Form® Adaptor is designed to trap vinyl flooring in place, maintaining a watertight installation

Product Codes

GW90 Metal-Topped 90mm Waste	25434
GW90 Tuff Form® Adaptor (waste not included)	25409



GW90 Metal-topped 90mm Waste (25434)



GW90 Metal-topped 90mm Waste (25434) with Tuff Form® Adaptor (25409)

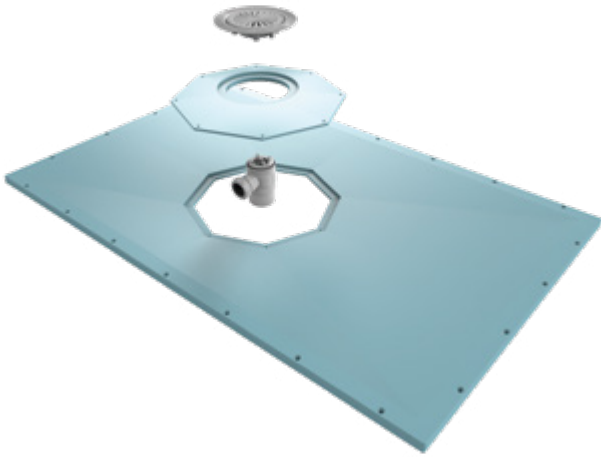
Guarantees & Approvals



Compatible Products

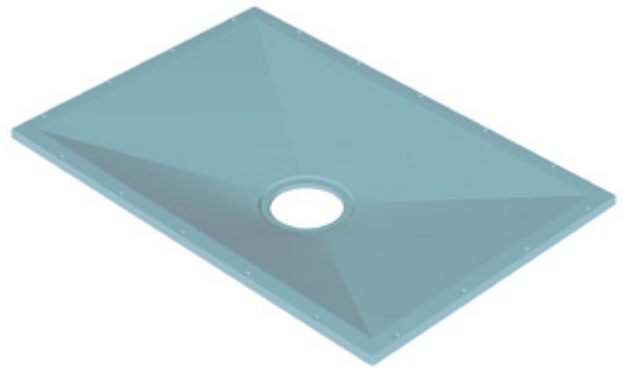
The GW90 Waste (25434) is compatible with Tuff Form® and Tuff Form8® if fitted in conjunction with the Tuff Form® Waste Adaptor (25409):

Tuff Form8® Wetroom Former



900x900 Tuff Form8® Wetroom Former	21130
1000x1000 Tuff Form8® Wetroom Former	21131
1135x770 Tuff Form8® Wetroom Former	21132
1200x1200 Tuff Form8® Wetroom Former	21133
1300x820 Tuff Form8® Wetroom Former	21134
1400x900 Tuff Form8® Wetroom Former	21135
1500x820 Tuff Form8® Wetroom Former	21136
1500x1200 Tuff Form8® Wetroom Former	21137
1800x820 Tuff Form8® Wetroom Former	21138

Tuff Form® Wetroom Former



900x900 Tuff Form® Wetroom Former	21000
1000x1000 Tuff Form® Wetroom Former	21008
1135x770 Tuff Form® Wetroom Former	21012
1200x900 Tuff Form® Wetroom Former	21015
1200x1200 Tuff Form® Wetroom Former	21018
1300x820 Tuff Form® Wetroom Former	21027
1400x900 Tuff Form® Wetroom Former	21028
1500x820 Tuff Form® Wetroom Former	21036
1500x1200 Tuff Form® Wetroom Former	21045
1800x820 Tuff Form® Wetroom Former	21050