

## Product Overview

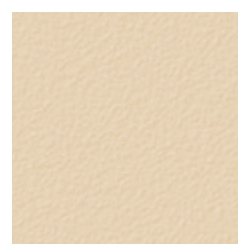
In a wet room installation, safety flooring is used to provide a slip-resistant surface and to create a hygienic and safe environment for a wide range of users. AKW Safety Flooring provides the same level of slip resistance in both wet or dry conditions, regardless of whether the user is wearing shoes or barefoot. This has been thoroughly tested in a variety of high-risk conditions. The test results are covered below.

## Features & Benefits

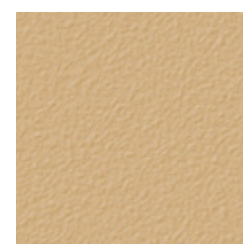
- + Eight contemporary, dementia-friendly accredited colours to choose from, seven of which have achieved the highest rating (1a) following a review by the Dementia Services Development Centre (DSDC) at the University of Stirling
- + AKW Safety Flooring has achieved the highest slip resistance rating for barefoot users in wet and soapy environments
- + Light Reflective Value – range includes plain colours to help you achieve high contrast in care environments
- + Suitable for users with Dementia as there are no large speckles in the flooring, which can cause confusion
- + Watertight, impervious surface – fully bonded system that liquids cannot penetrate and has nowhere for bacteria to go
- + Easy to clean surface limits the build up of limescale
- + Long-lasting, providing you with 10 years of guaranteed slip-resistant flooring (if installed to manufacturer specification)
- + PVC floor covering with glass fibre reinforced polyester cellulose backing – allows it to be used with underfloor heating
- + Phthalate free – plasticisers are based on natural resources
- + Cut to order in 0.5m increments x 2m width

## Product Specification

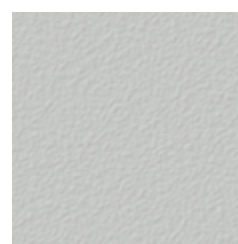
- + Typical Installation – wet room installations, social housing, care homes
- + Material – PVC
- + Light Reflective Values – see colours opposite
- + Safety Flooring is non-returnable because it is cut to order



**Ivory** (LRV 56)  
+ DSDC Rating 1a



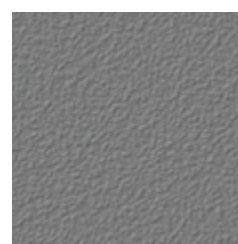
**Beige** (LRV 46)  
+ DSDC Rating 1a



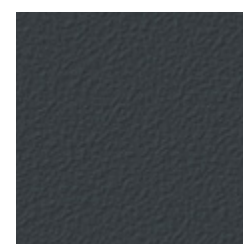
**Cement** (LRV 55)  
+ DSDC Rating 1a



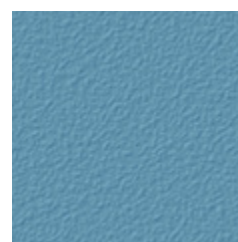
**Dove** (LRV 38)  
+ DSDC Rating 1a



**Slate** (LRV 18)  
+ DSDC Rating 1a



**Anthracite** (LRV 10)  
+ DSDC Rating 1b



**Wedgewood** (LRV 26)  
+ DSDC Rating 1a



**Dusk** (LRV 13)  
+ DSDC Rating 1a



### AKW Safety Flooring has been awarded DSDC Dementia-friendly product accreditation

"The Dementia Services Development Centre at the University of Stirling have undertaken a review of this product and have rated it's design in relation to dementia design principles and it's usability within a dementia-inclusive environment. For ease of identification, the suitability of the product is classified by number with corresponding explanation of use, within the ratings key provided.

The DSDC Accredited Product logo is awarded on the merit of the individual product and colour-way. This accreditation does not merit the manufacture or final application of the product. Whilst every endeavour has made to ensure the ratings are reflective of the products suitability and applied use at the time of print, DSDC cannot be held responsible for the application of the final product, it's performance or its interface with other products or finishes. For an environment to be considered 'dementia-inclusive' or 'dementia-friendly' careful consideration must be given to the specification of adjoining finishes, their performance specification (for example light reflectance value (LRV), slip resistance and use of pattern) and their suitability for their intended use."

## Technical Specification

Feature	EN Standard	Detail
Flooring type	EN 13553	Safety Flooring
Ramp test with oil*	DIN 51130:2014-02	R10
Ramp test barefoot with soapy water*	DIN 51097:1992	Class C
<b>*See Slip Resistance testing information on the following page</b>		
Pendulum test (wet & dry)	BS 7976-2:2013	>36
Dynamic coefficient of friction	EN 13893:2002	>0.49
Total thickness	EN – ISO 24346:2006	2mm
Thickness wear layer	EN – ISO 24340:2006	0.75mm
Commercial very heavy wear	EN – ISO 10874:2009	Class 34
Light industrial wear	EN – ISO 10874:2009	Class 43
Roll width	EN – ISO 24341:2006	2.0m
Roll length	EN – ISO 24341:2006	20m
Total weight	EN – ISO 23997:2007	2.85kg/m <sup>2</sup>
Dimensional stability	EN – ISO 23999:2018	<0.05%
Curling	EN – ISO 23999:2018	(≤ 8 mm) 3.5mm
Residual indentation	ISO 24343-1:2007	≤ 0.10mm (avg. 0.04mm)
Castor chair continuous use	EN – ISO 4918:2016	Pass – no effect
Water tightness	EN 13553:2017	Pass
Light fastness	EN – ISO 105-B02:2014	>6
Flexibility	EN – ISO 24344:2008	Pass
Electrical resistance	EN 1081:2018	0.17x10 <sup>9</sup> Ω Pass
Reaction to fire	EN 13501-1	Class Bfl-s1
Body voltage	EN 1815:2016	≤2kV Pass
Thermal conductivity	EN 12664:2001	0.050W/(m.K)
Thermal resistance	EN 12664:2001	0.040 m <sup>2</sup> .K/W
Use with underfloor heating		Suitable
Tested against emission of dangerous substances		Pass

## Slip Resistance

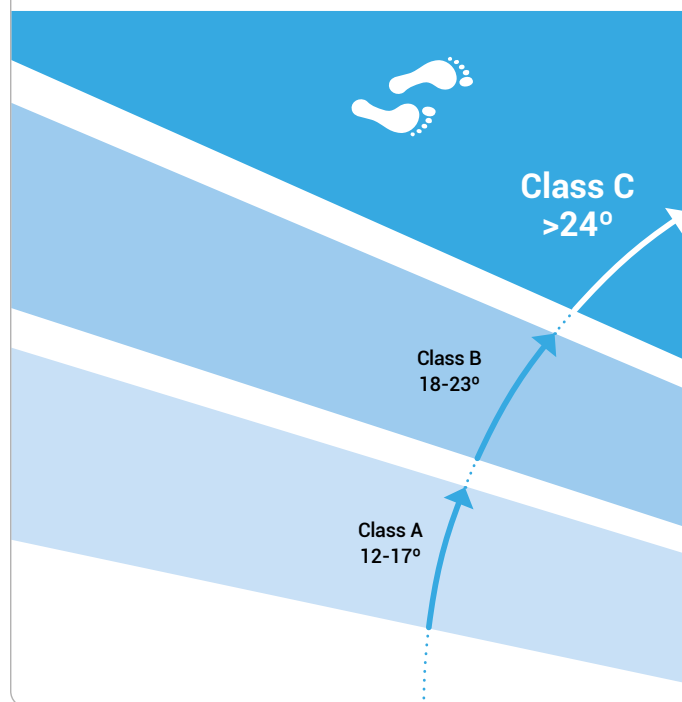
All AKW Safety Flooring is classified as having a low slip risk using the ramp tests below:

### Class C



#### Tests barefoot on a wet and soapy surface

- + AKW Safety Flooring meets the highest standard of slip resistance in a wet room.
- + This test is the most representative way of testing safety flooring in a wet room environment, as it tests barefoot use with wet and soapy contaminants. The surface pattern of AKW Safety Flooring has been designed to provide exceptional slip resistance under bare feet, which is why it meets Class C, the highest classification.

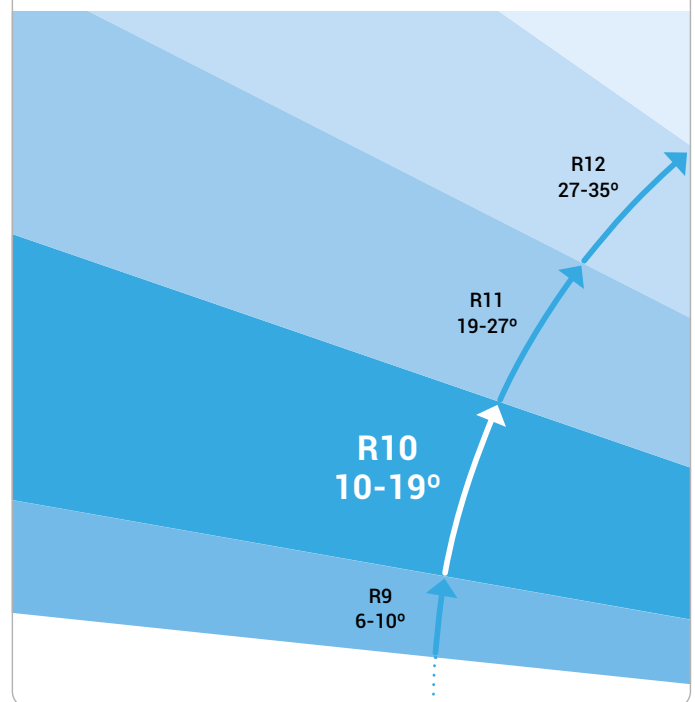


### R10 Standard



#### Tests footwear on an oil contaminated surface

- + Safety does not just stop at slip resistance.
- + AKW Safety Flooring has been designed to be R10 rated so it is not too rough for barefoot users and those with care needs, yet still gives a high level of slip resistance.
- + The R11/R12 standard tests heavy industrial anti-slip flooring. The surface required to meet these standards requires an abrasive finish which is simply not suitable in a care environment.



## Product Codes:

Product	0.5m x 2m	20m x 2m roll
Safety Flooring – Anthracite	21901-ANT	21903-ANT
Safety Flooring – Beige	21901-BGE	21903-BGE
Safety Flooring – Cement	21901-CMT	21903-CMT
Safety Flooring – Dove	21901-DVE	21903-DVE
Safety Flooring – Dusk	21901-DSK	21903-DSK
Safety Flooring – Ivory	21901-IVR	21903-IVR
Safety Flooring – Slate	21901-SLT	21903-SLT
Safety Flooring – Wedgewood	21901-WDW	21903-WDW

## Accessories

Bond-it Levelling Floor Compound (20kg)	21896
Bond-it Latex Liquid (4.5L)	21895
F44 Styccobond Flooring Adhesive (5L)	21897
F66 Styccobond Solvent Free Contact Adhesive (5L)	30128
Ottoseal® S51 Coloured Silicone	21900
Flooring Threshold Strip (950mm length)	27695
Sahara for Ivory Flooring	21900SHR
Cream Beige for Beige Flooring	21900CBG
Flash Grey for Cement Flooring	21900FGR
Agate Grey for Dove Flooring	21900AGR
Titan Grey for Slate Flooring	21900TGR
Pastel Blue for Wedgewood Flooring	21900PBL
Brilliant Blue for Dusk Flooring	21900BBU
Anthracite for Anthracite Flooring	21900ANT
Tile to Vinyl Floor Transition Strip – Pack of 10 (3m lengths)	30073
Tile to Vinyl Floor Transition Strip with Flexible Lip	21905
Wallboard Bottom onto Vinyl PVC (3m)	27690

## Product Codes:

### Accessories (continued)

3m Vinyl Floor Coving – Pack of 5 (3m lengths)	30085
Flooring Weld Rod 100m roll	21904 + colour code
1m length	21902 + colour code
(+ colour code – ANT, BGE, CMT, DVE, DSK, IVR, SLT, WDW)	
CLS Timber 3"x2" – 76mm (3") x 50mm (2") x 2400mm (96") – Untreated	21887
CLS Timber 3"x2" – 76mm (3") x 50mm (2") x 2400mm (96") – Treated	21886
Plywood FSC Cert BB/BB Grade 1200x2440mm – 4mm thick (0.15in)	21884
– 6mm thick (0.24in)	21980
– 9mm thick (0.3in)	21888
– 12mm thick (0.5in)	21885