

**Product Overview:** This raised height, long projection toilet pan has been specially designed for use in AKW Doc M packs.

**Features:**

- Raised height
- Large footprint
- 650mm projection
- 4 point fixing to floor supplied
- Weight limited to 60 stone / 400kg

**Benefits:**

- Attractively manufactured from white vitreous china
- CE Certified
- Conforms to BS EN997
- Height with toilet seat is 480mm, which complies to Doc M guidelines
- Long projection to assist side transfers



### Guarantee & Certification:



Height 480mm  
complies  
with Doc M



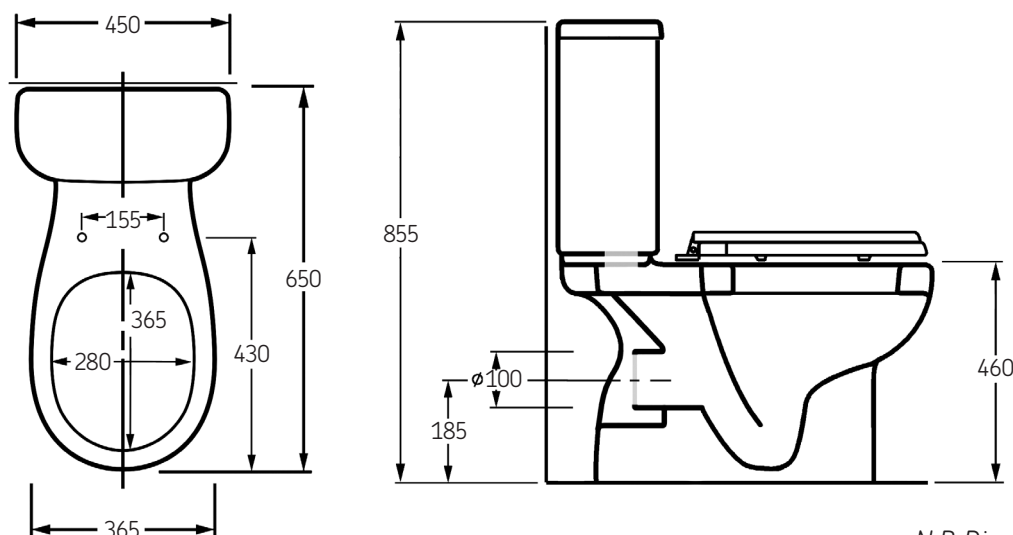
**Product Specification:**

- CE Certified
- Conforms to BS EN997

### Product Codes:

Codes	Description
23162	AKW460S Close Coupled Toilet Pan

### Dimensions:



*N.B Dimensions shown in millimetres (mm)*

\* The lifetime warranty excludes normal wear and tear in general domestic applications. It applies only to products being installed for the first time and according to relevant local and national regulations.