

Wash Basin Fixing Brackets

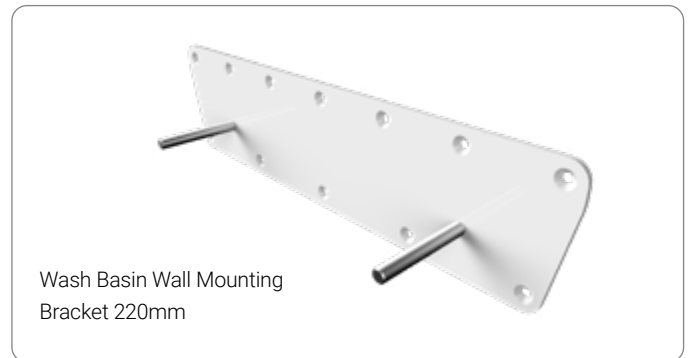
Product Overview

Wash basin brackets are provided to securely fix wash basins to your wall.

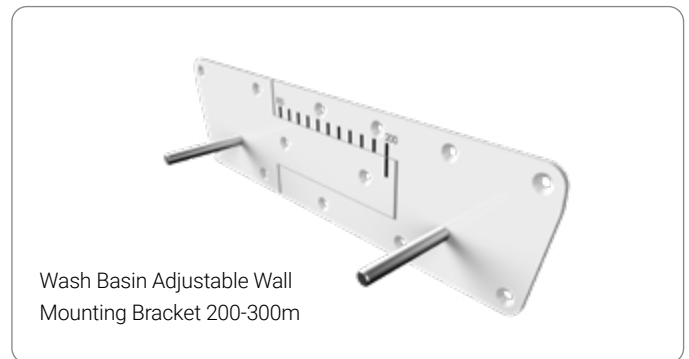
Available in three sizes, 220mm, 280mm and an adjustable bracket with a range between 200 – 300mm.

Features & Benefits

- + Made from stainless steel for durability
- + Choice of three size brackets to provide a solution for most sizes of wash basin
- + This product gives more flexibility on install as it has twelve fixing holes on the 220mm and 280mm bracket and thirteen fixing holes on the adjustable bracket
- + The extra fixing holes make it easier to execute a secure installation as the load is distributed
- + Welded bolts attached to the bracket enable easy mounting of the wash basin (see illustrations below)
- + The studs have M8 threads, nuts not supplied



Wash Basin Wall Mounting Bracket 220mm



Wash Basin Adjustable Wall Mounting Bracket 200-300mm

Guarantee & Approvals

- + Lifetime warranty



Wash Basin Fixing Brackets

Product Codes

Wash Basin Wall Mounting Bracket 220mm	23921
Wash Basin Wall Mounting Bracket 280mm	23922
Wash Basin Adjustable Wall Mounting Bracket	23923

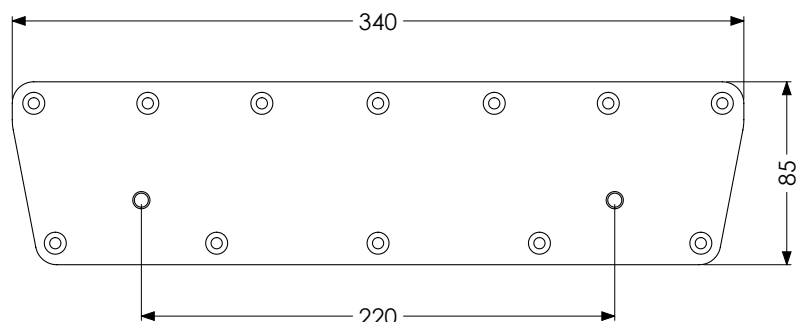
Related Products

AKW Sanitaryware Basin-To-Wall Fixing Kit	23879
---	-------

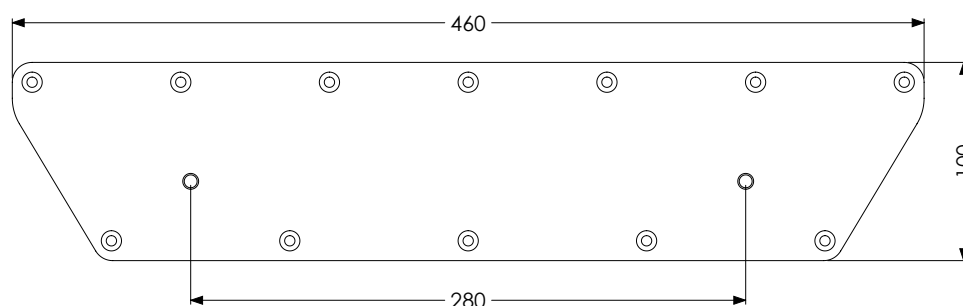
Compatibility Matrix

Range	Part no.	Descriptor	Wash Basin Bracket		
			220mm 23921	280mm 23922	Adjustable 23923
Livenza Plus	23907	450mm 1 Tap Without Chain-Stay Hole	●		●
	23907cs	450mm 1 Tap With Chain-Stay Hole	●		●
	23912	450mm 2 Tap With Chain-Stay Hole	●		●
	23903	500mm 1 Tap Without Chain-Stay Hole		●	●
	23903cs	500mm 1 Tap With Chain-Stay Hole		●	●
	23913	500mm 2 Tap With Chain-Stay Hole		●	●
	23908	550mm 1 Tap Without Chain-Stay Hole		●	●
	23908cs	550mm 1 Tap With Chain-Stay Hole		●	●
	23914	550mm 2 Tap With Chain-Stay Hole		●	●
Livenza	23507	450mm 1 Tap Hole	●		●
	23512	450mm 2 Tap Hole	●		●
	23503	500mm 1 Tap Hole		●	●
	23513	500mm 2 Tap Hole		●	●
	23508	550mm 1 Tap Hole		●	●
	23514	550mm 2 Tap Hole		●	●
Standard	23126	Standard Wash Basin 450mm	●		●
	23127	Standard Wash Basin 500mm			●
Doc M	23117	Finger Rinse Basin			●
Ergonomic	23115	Ergonomic Basin		●	●

Dimensions

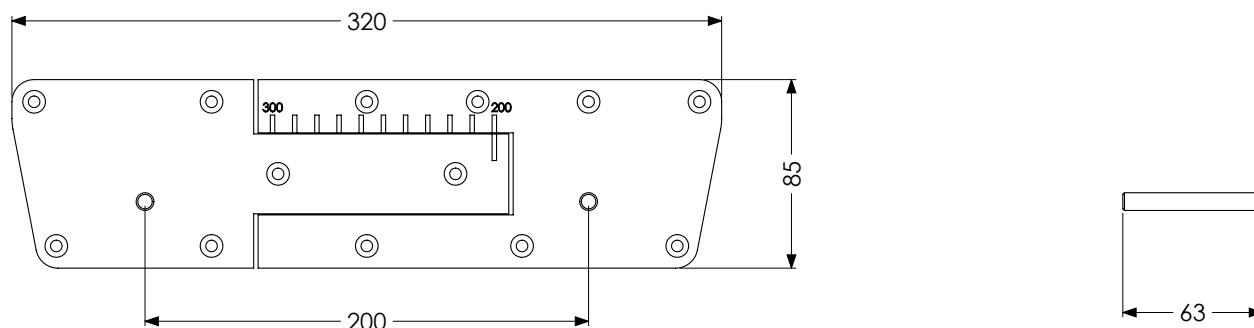


23921 - Wash Basin Wall Mounting Bracket 220mm

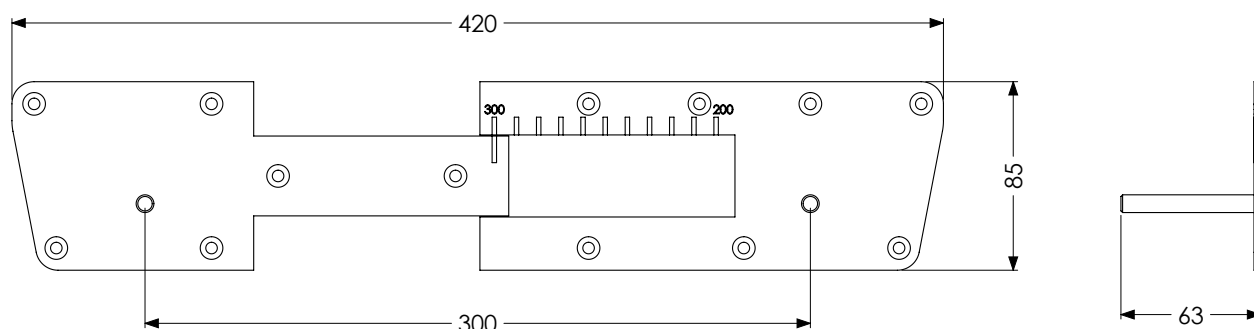


23922 - Wash Basin Wall Mounting Bracket 280mm

Dimensions



23923 - Wash Basin Adjustable Wall Mounting Bracket (Minimum)



23923 - Wash Basin Adjustable Wall Mounting Bracket (Maximum)